



XTENSION™

Premium Arcade Gaming Equipment

32 UPRIGHT

USER & ASSEMBLY GUIDE

Xtension Arcade Cabinet

Contents:

- Page 1:** Cover
- Page 2:** Base Section - Cabinet Parts List
- Page 3:** Base Section - Hardware List
- Page 4 - 9:** Base Section - Assembly Instructions
- Page 10:** Top Section - Cabinet Parts List
- Page 11:** Top Section - Hardware List
- Page 12-19:** Top Section - Assembly Instructions
- Page 20:** Game On!

Required Tools:

- Phillips Head Screwdriver
- Included M4 Allen Wrench

PLEASE NOTE:

Adult Supervision Recommended For Assembly

2 People Required For Assembly

PLEASE TRY OUR NEW VIDEO INSTRUCTIONS!

youtube.com/@Recroommasters



WARNING:

Please be sure to read assembly instructions thoroughly, as improper assembly may lead to instability.

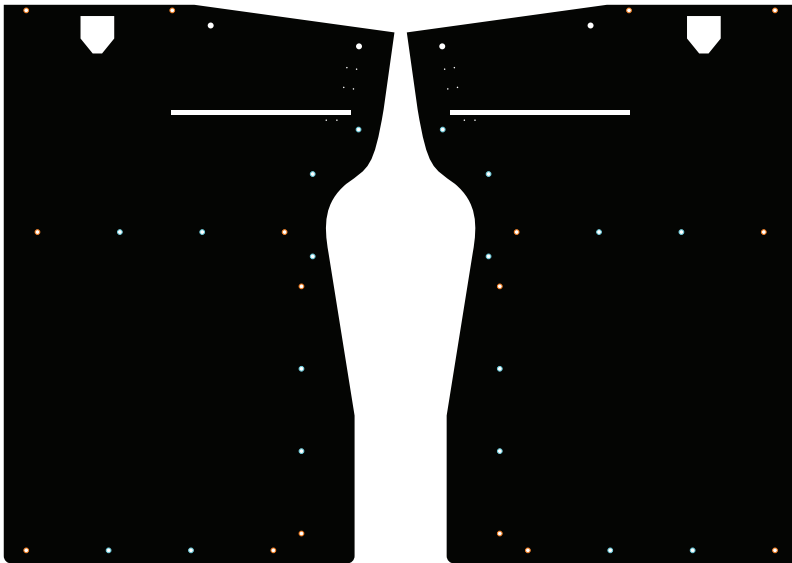
NEED SUPPORT?

Send an email to:
support@recroommasters.com



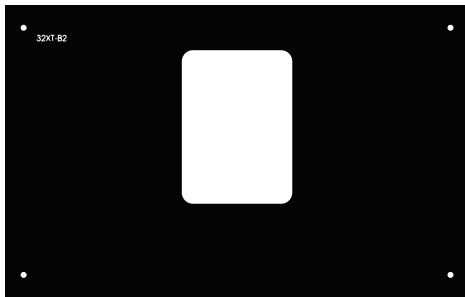
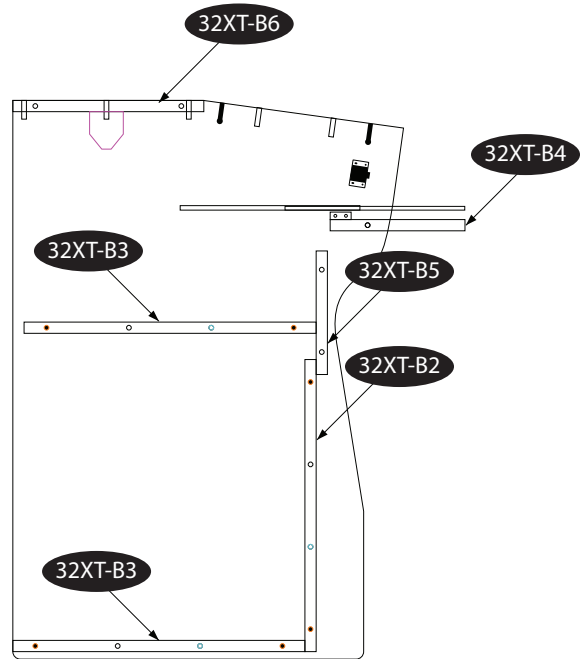
Xtension Arcade Base Section

Part Description



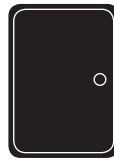
Part #1 (Right Side Base Upright)

Part #2 (Left Side Base Upright)



32XT-B2
1 PC

Part #3 (Front/Kick Panel)



Part #0
(Metal Coin Door)
This Part May Be Optional



32XT-B4
1 PC

Part #8 (Unmarked Keyboard Door)



32XT-B5
1 PC

Part #5 (Front Top Support)



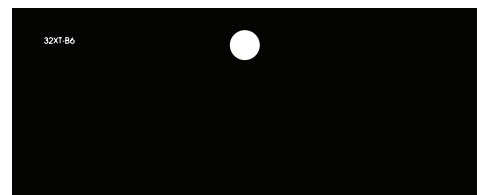
32XT-B3
2 PCS

Part #4 (Base Floor & Middle Shelf)



1 PC

Part #7 (Keyboard Tray)



32XT-B6
1 PC

Part #6 (Center Base Support)

NOTE: **Part #3 32XT-B2** and **Part #4 32XT-B3** panels are interchangeable depending on whether or not a Metal Coin Door or Coin Mech are used. If not using a Metal Coin Door or Coin Mech with your cabinet, use one of the **Part #4 32XT-B3** blank panels in place of the **Part #3 32XT-B2** cutout panel on the front of your cabinet. These three panels are interchangeable.

Xtension Arcade Base Section

Hardware Description



30 PC
Wood Dowel Pin



16 PC
Metal Cross Dowel



1 PC
M4 Allen Wrench



12 PC
60mm Bolt (small head)



2 PC (SETS)
Door Stopper with Screws



2 PC (SETS)
Push-to-Open Hardware
Metal Catch Brackets with screws

Xtension Arcade Base Section

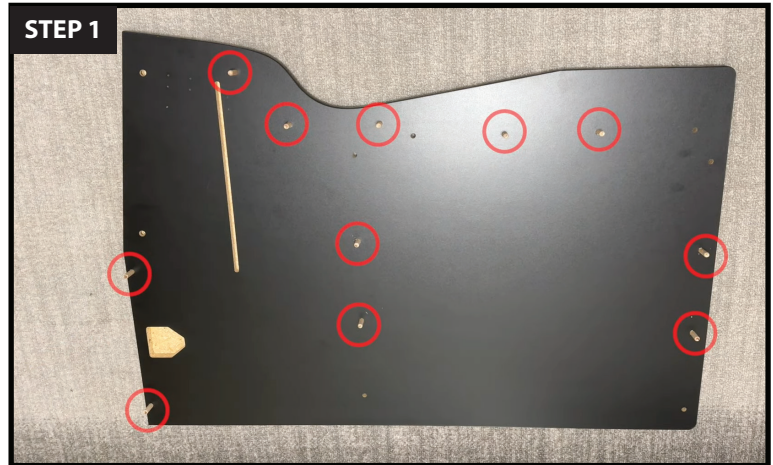
Assembly Instructions

PLEASE NOTE: 2 people are required as 1 person will need to support the parts until base is securely bolted.

STEP 1

Parts Needed: Part #1 / wood dowel pins (x11)

Lay **PART #1** (Right Side Base Upright) of the cabinet on a soft surface and insert the wood dowel pins into any holes that are not through holes. When done there will be a total of 11 dowels installed where the red circles are pictured.

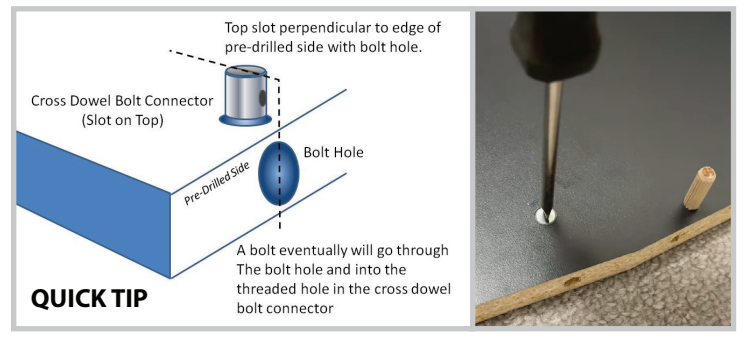


STEP 2

Parts Needed: Part #1 / metal cross dowels (x2)
flathead screwdriver [optional]

Next install two metal cross dowels in the remaining holes towards the top of the panel.

QUICK TIP: When inserting the metal crossed dowels in **STEP 2**, make sure that the slot is facing upwards. The slot must also be aligned with the hole on the side of the panel. If needed you can adjust the position of the cross dowel with a flathead screwdriver, so that it is perfectly aligned with the hole.



STEP 3

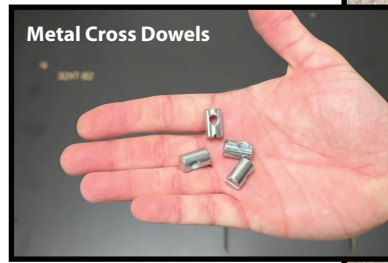
Parts Needed: Part #2 / metal cross dowels (x2)

Next lay **PART #2** (Left Side Base Upright) of the cabinet on a soft surface and install two metal cross dowels where the green circles are pictured (same as the previous **STEP 2**), but do not install any of the wood dowel pins on this **PART #2** (Left Side Base Upright) panel. Set this panel aside for now as we will not use it again until we get to **STEP 14**.



Xtension Arcade Base Section

Assembly Instructions



STEP 4

Parts Needed: Part #3 / metal cross dowels (x4)

For this next step, insert four metal cross dowels into the corners of **PART #3 [32XT-B2]** remembering the correct orientation shown in **STEP 2**.



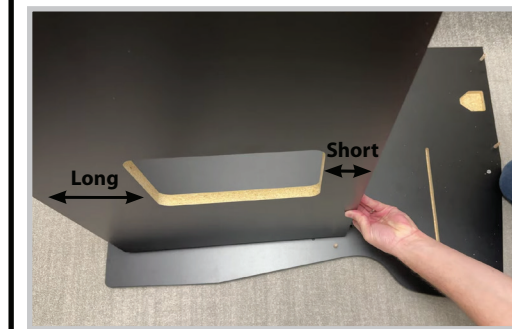
STEP 5

Parts Needed: Part #1 / Part #3

Next locate the lower pins of **PART #1** (Right Side Base Upright), which are shown in the red circles, and insert **PART #3 [32XT-B2]** onto the pins of **PART #1** (Right Side Base Upright).



QUICK TIP: The longer side underneath the cutout will face the bottom of the cabinet. The panel number [32XT-B2], printed on the panel, will face the inside of the cabinet.



NOTE: The **PART #3 32XT-B2** and **PART #4 32XT-B3** panels are interchangeable if not using a Metal Coin Door or Coin Mech.

STEP 6

Parts Needed: Part #4 (x2)
metal cross dowels (x8)

Next insert metal cross dowels into each of the four corners of both **PART #4 [32XT-B3]** panels. You will need eight total metal cross dowels to fill both **PART #4 [32XT-B3]** panels.



Xtension Arcade Base Section

Assembly Instructions

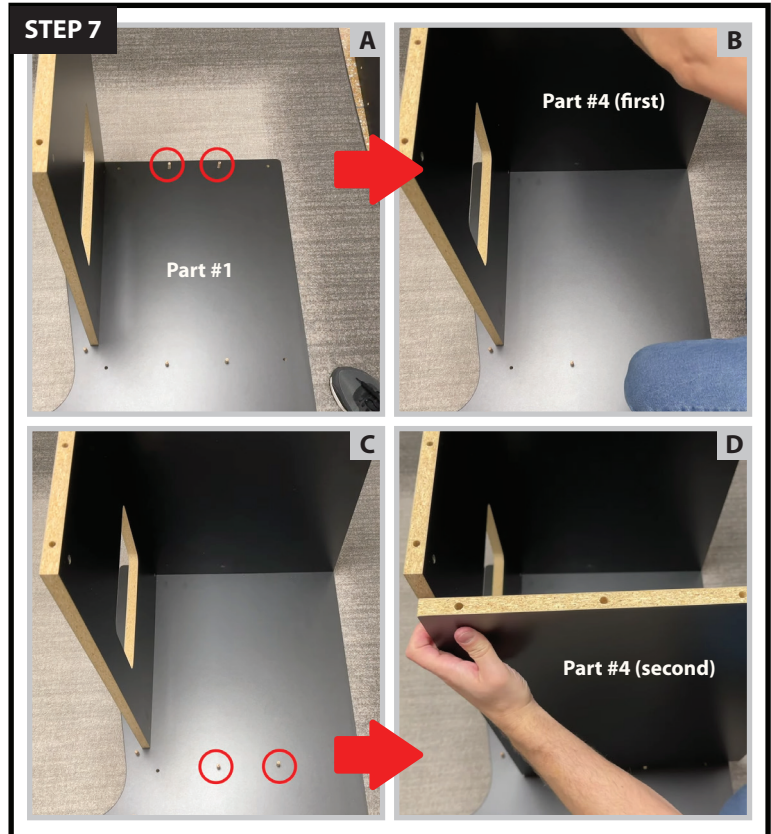
STEP 7

Parts Needed: Part #1 / Part #4 (x2)

Next insert one of the two **PART #4 [32XT-B3]** panels into the bottom two wood dowel pins of the **PART #1** (Right Side Base Upright) panel where the red circles are [see images A & B].

Then insert the second **PART #4 [32XT-B3]** panel into the two center wood dowel pins where the red circles are [see images C & D].

QUICK TIP: If you are not using the optional Metal Coin Door or Coin Mech, you can install the **PART #3 [32XT-B2]** front panel with the coin door cutout in either of the **PART #4 [32XT-B3]** positions and then install one of the blank **PART #3 [32XT-B2]** panels in the front instead.



STEP 8

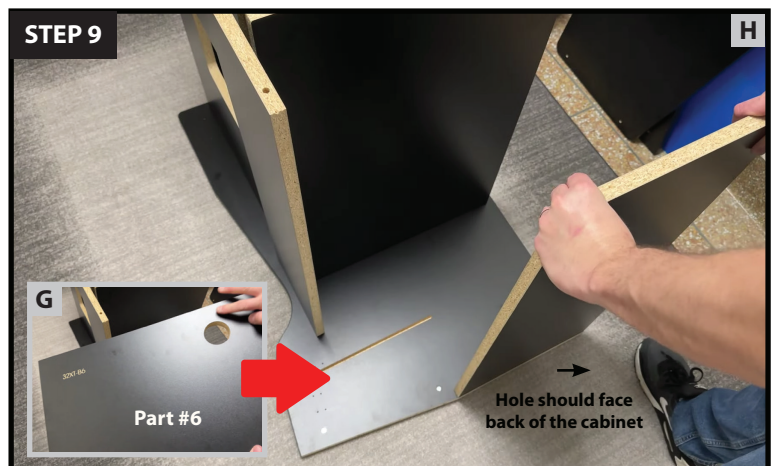
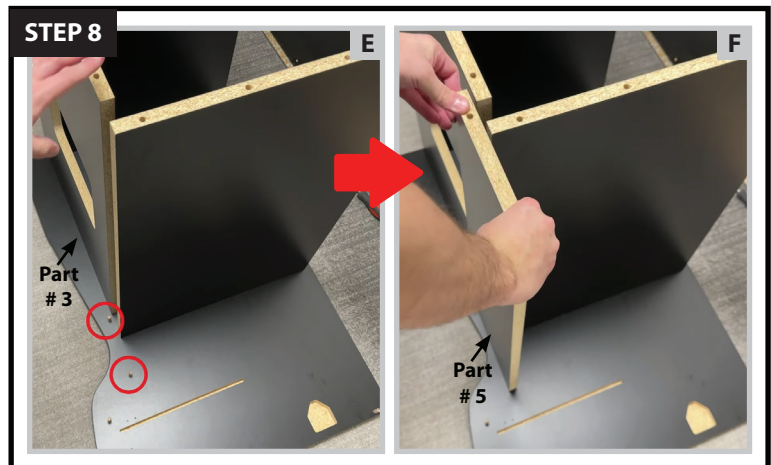
Parts Needed: Part #1 / Part #5

We can now install **PART #5 [32XT-B5]** panel into the two wooden dowel pins above the **PART #3 [32XT-B2]** front panel where the red circles are [see images E & F].

STEP 9

Parts Needed: Part #1 / Part #6

Next install **PART #6 [32XT-B6]** center base support panel with the hole [see image G for close up of this panel] facing the back of the cabinet into the two wooden dowel pins at the very top of the **PART #1** (Right Side Base Upright) panel [see image H].



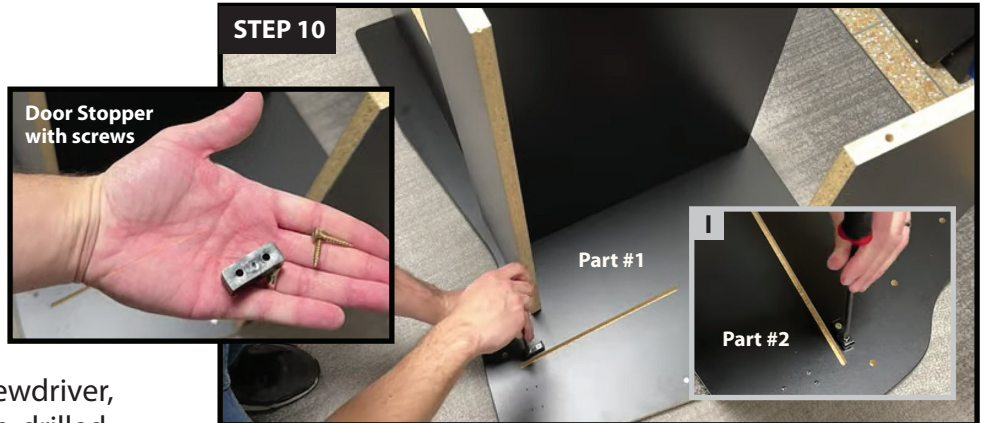
Xtension Arcade Base Section

Assembly Instructions

STEP 10

Parts Needed: Part #1
Part #2 / screwdriver
door stopper (x2) with screws (x4)

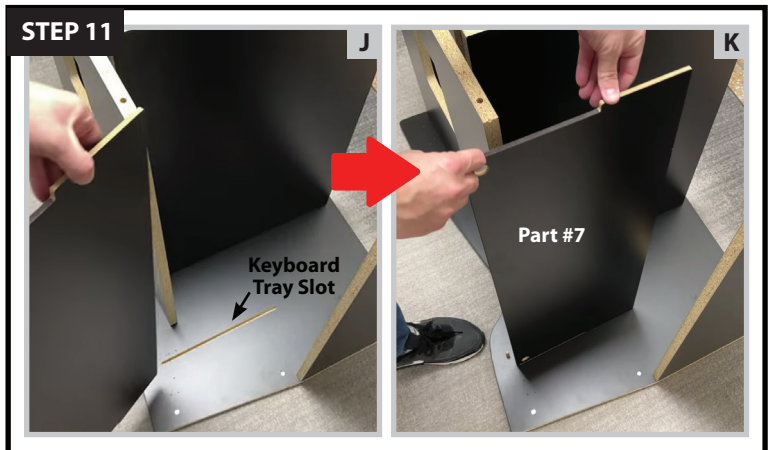
Using the provided screws and screwdriver, screw the door stopper into the pre-drilled holes beneath the keyboard tray slot on the **PART #1** (Right Side Base Upright) panel. Make sure to repeat this step on the **PART #2** (Left Side Base Upright) panel as well [see image I].



STEP 11

Parts Needed: Part #1 / Part #7

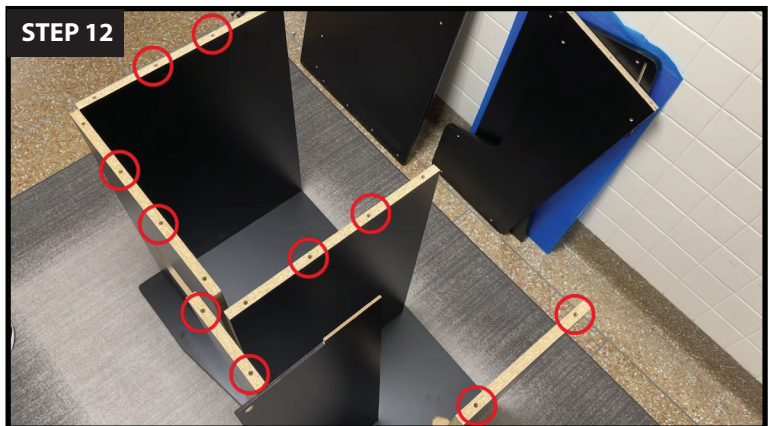
Next insert **PART #7** (Keyboard Tray) into the keyboard tray slot on **PART #1** (Right Side Base Upright) panel and rest it on the adjoining **PART #5 [32XT-B5]** panel [see images J & K].



STEP 12

Parts Needed: Part #3 / Part #4 (x2) / Part #5
Part #6 / wood dowel pins (x10)

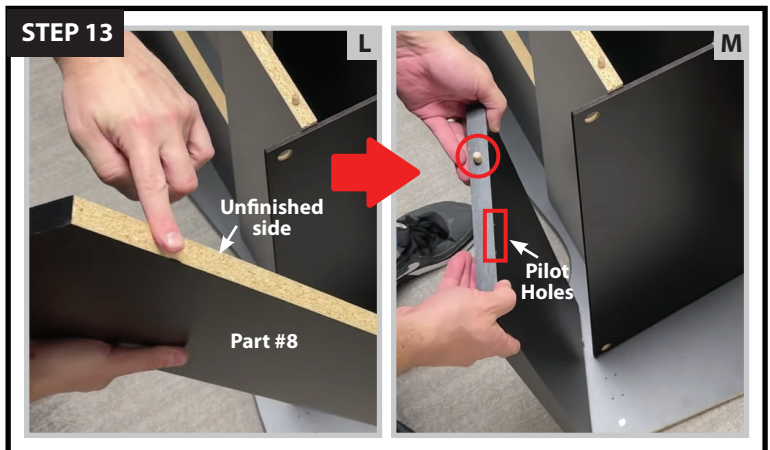
Next insert 10 wood dowel pins into the holes where the red circles are pictured.



STEP 13

Parts Needed: Part #1 / Part #8
wood dowel pins (x1)

We can now install **PART #8 [32XT-B4]**, the unmarked keyboard door. Face the unfinished side [see image L] towards the bottom of the cab and the pilot holes [see image M] towards the inside of the cab. Insert a dowel pin into the hole on the side of the door as shown in the red circle [see image M] and insert the door into the remaining wood dowel pin on **PART #1** (Right Side Base Upright) in front of the keyboard tray.



Xtension Arcade Base Section

Assembly Instructions

STEP 14

Parts Needed: Part #2 / 60mm bolts (x6)
4M Allen Wrench

Next hold the door in place while a second person grabs the **PART #2** (Left Side Base Upright) panel that we set aside earlier. Lay this panel over the top of all of the panels pictured in image N. Make sure you look underneath and adjust as necessary until all of the wood dowel pins are in the correct holes. Once everything is fit together tight [see image O], you can now secure the **PART #2** (Left Side Base Upright) panel using six 60mm bolts where the red circles are [see image P] with the provided M4 Allan Wrench [see image Q].

NOTE: DO NOT OVER TIGHTEN THE BOLTS!

STEP 15

For this step, rotate the base of the cabinet 90° to its upright position [see images R & S].

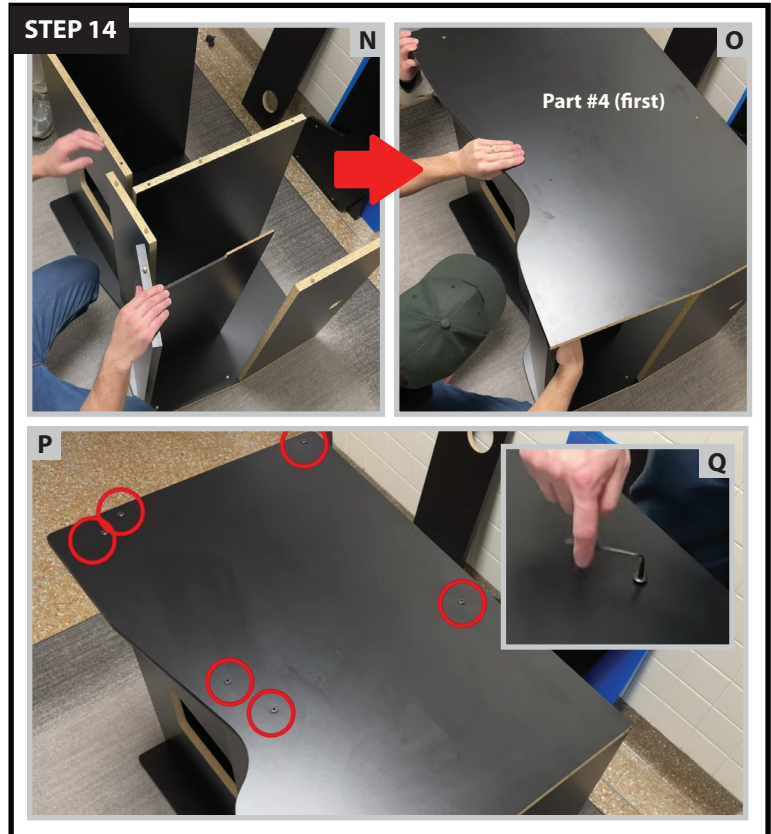
NOTE: IT IS VERY IMPORTANT TO APPLY PRESSURE ON THE UNBOLTED SIDE AS THERE ARE NO BOLTS SECURING IT IN PLACE WHEN ROTATING! TWO PEOPLE ARE HIGHLY RECOMMENDED FOR THIS STEP.

STEP 16

Parts Needed: Part #1 / 60mm bolts (x6)
4M Allen Wrench

Next insert an additional six 60mm bolts on the **PART #1** (Right Side Base Upright) panel where the red circles are with the provided M4 Allan Wrench.

NOTE: DO NOT OVER TIGHTEN THE BOLTS!



Xtension Arcade Base Section

Assembly Instructions

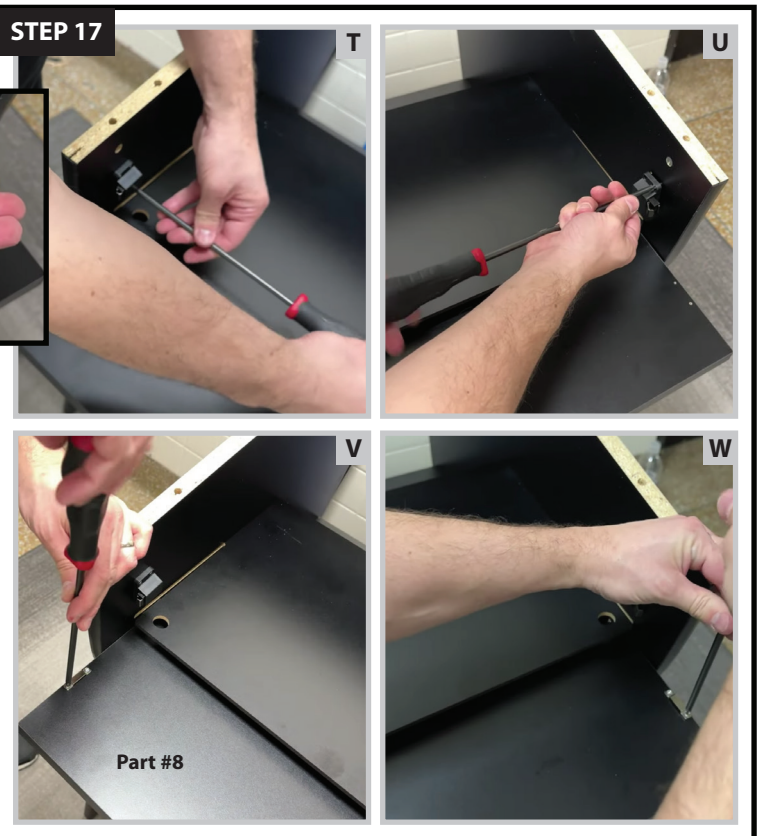


STEP 17

Parts Needed: Part #1 / Part #2 / Part #8
push-to-open hardware (x2) with screws (x8)
metal catch brackets (x2) with screws (x4)
screwdriver

You can now install the push-to-open hardware using the pilot holes on the inside of both **PART #1** (Right Side Base Upright) and also **PART #2** (Left Side Base Upright) panels with a screwdriver and screws [see images T & U].

Now you can also install the metal catch brackets to the pilot holes on the left and right sides of **PART #8 [32XT-B4]**, the unmarked keyboard door with a screwdriver and screws [see images V & W].



STEP 18

Parts Needed: Part #1 / Part #2
wood dowel pins (x8)

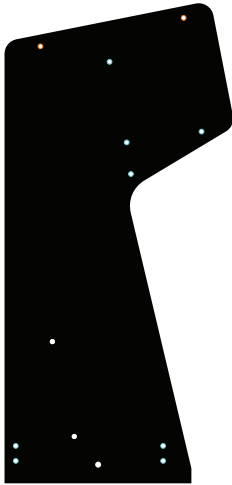
Finally, insert eight wood dowel pins into the holes where the red circles are shown on **PART #1** (Right Side Base Upright) and also **PART #2** (Left Side Base Upright) panels.

Congratulations! At this point you're halfway done and now let's move on to the top section of the cabinet.

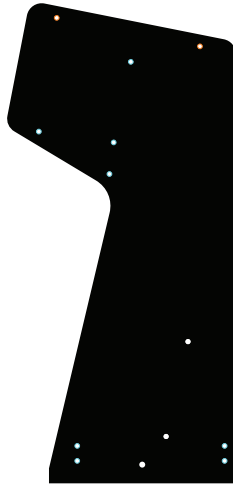


Xtension Arcade Cabinet Top Section

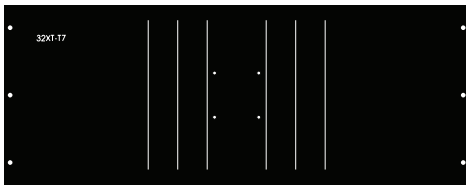
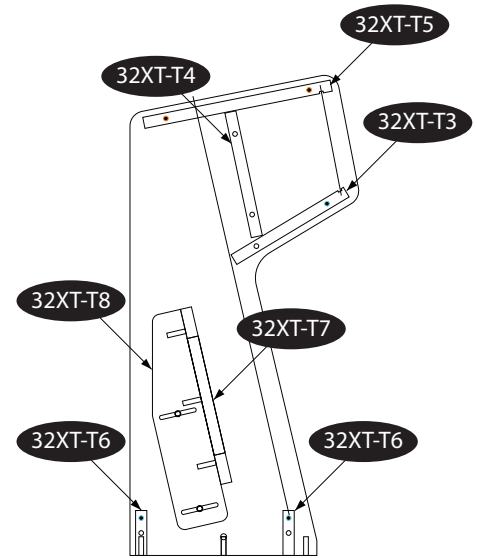
Part Description



Part #4 (Right Side Top Upright)



Part #3 (Left Side Top Upright)



32XT-T7
1 PC

Part #1 (TV/Monitor Mount)



32XT-T3
1 PC

Part #6 (Speaker Panel)



Part #8 (Speaker Grill Covers)



32XT-T8
2 PC

Part #2 (TV/Mounting Side Brackets)



32XT-T4
1 PC

Part #7 (Lower Back)

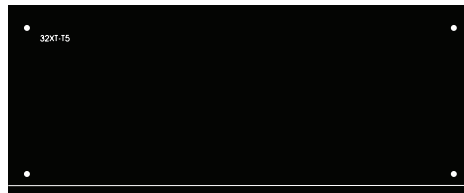


Part #9 (Monitor Bezel Plexi Glass)



32XT-T6
2 PC

Part #5 (TV/Monitor Bottom Support)



32XT-T5
1 PC

Part #12 (Top)



Part #10 (LED Light Housing)



Part #11 (Marquee Plexi Glass)

Xtension Arcade Cabinet Top Section

Hardware Description



1 PC
M4 Allen Wrench



4 PC
60mm Bolt (large head)



14 PC
60mm Bolt (small head)



4 PC
Monitor Screw



4 PC
TV Bracket Bolt



13 PC
Wood Dowel Pin



14 PC
Metal Cross Dowel



4 PC
Large Washer



8 PC
Speaker Screw

Xtension Arcade Cabinet Top Section

Assembly Instructions

PLEASE NOTE:

2 people are required when combining the base and top sections of the cabinet.



STEP 1

Parts Needed: Part #1 / wood dowel pins (x4)

For the top section we'll start by assembling the TV mounting bracket. Lay **PART #1 [32XT-B7]** on a soft surface and insert four dowel pins into the holes where the red circles are pictured.



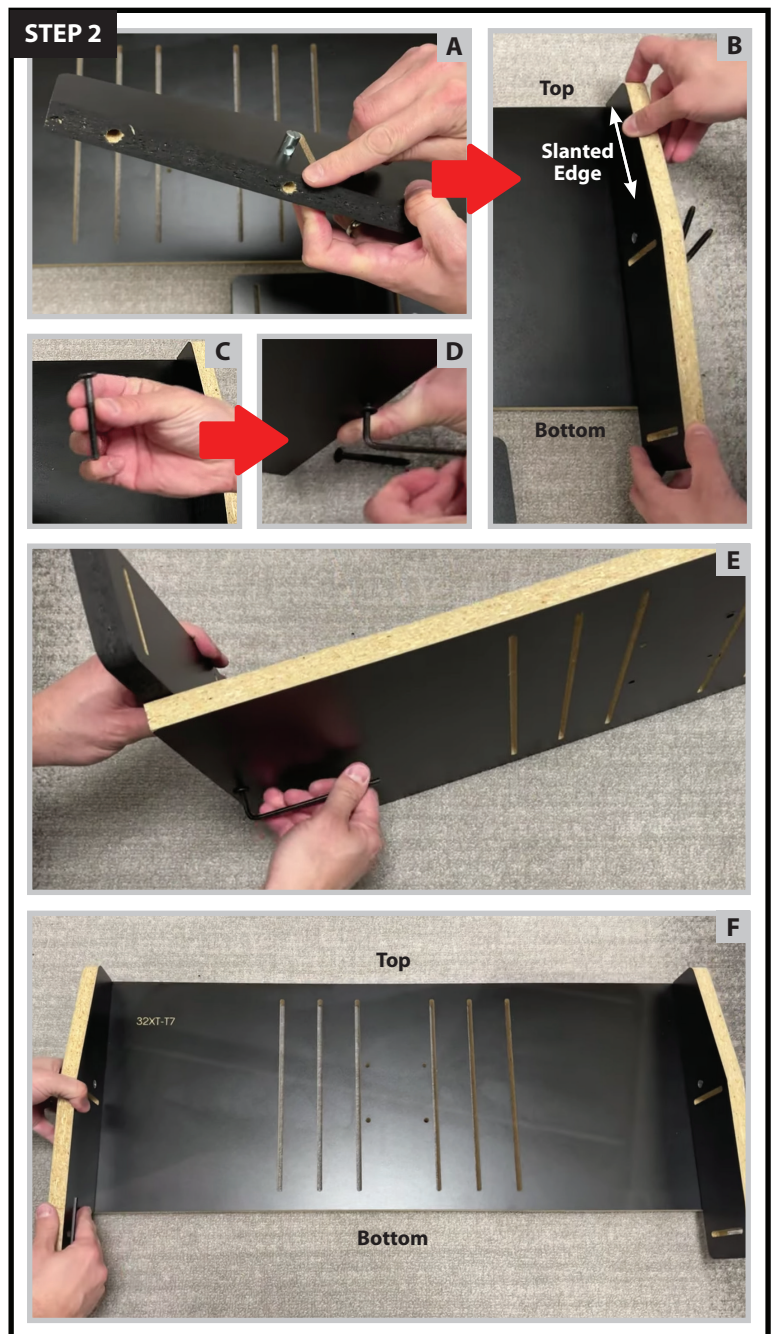
STEP 2

Parts Needed: Part #1 / Part #2 (x2)
metal cross dowels (x2) / 60mm screws (x2)
4M Allen Wrench / flathead screwdriver [optional]

Next, insert a metal cross dowel into one of the **PART #2 [32XT-B8]** as shown in image A. Remember to use the correct orientation from earlier in this manual [see page 4 / Base Section / **STEP 2 QUICK TIP** for inserting the metal cross dowel]. Face the slanted edge of the right side panel towards the top and insert it into the dowel pins you previously installed [see image B]. You can now secure the **PART #2 [32XT-B8]** side panel to the rest of the **PART #1 [32XT-B7]** bracket with a 60mm bolt by flipping over the **PART #1 [32XT-B7]** bracket and inserting the 60mm bolt into the hole where the metal cross dowel is and secure it in place with the provided M4 Allan Wrench [see images C & D].

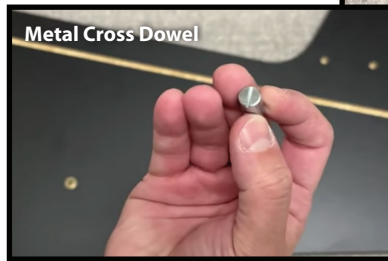
Repeat **STEP 2** on the other **PART #2 [32XT-B8]** left side panel [see image E].

When finished, the completely assembled TV/monitor bracket should look like image F.



Xtension Arcade Cabinet Top Section

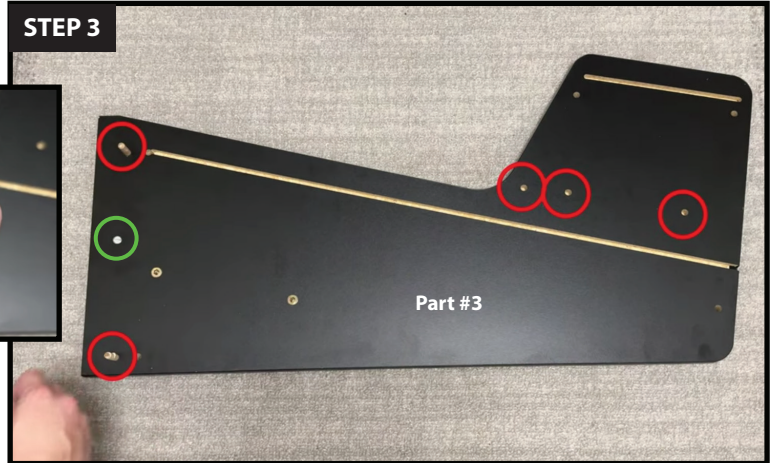
Assembly Instructions



STEP 3

Parts Needed: Part #3 / metal cross dowel (x1)
wood dowel pins (x5)

We will now move on to the **PART #3** (Left Side Top Upright) panel of the cabinet. Insert a metal cross dowel into the bottom center hole where the green circle is located. Then install five wood dowel pins into the red circles are located.



STEP 4

Parts Needed: Part #4 / metal cross dowel (x1)

Next, insert a metal cross dowel into the **PART #4** (Right Side Top Upright) panel where the red circle is located.

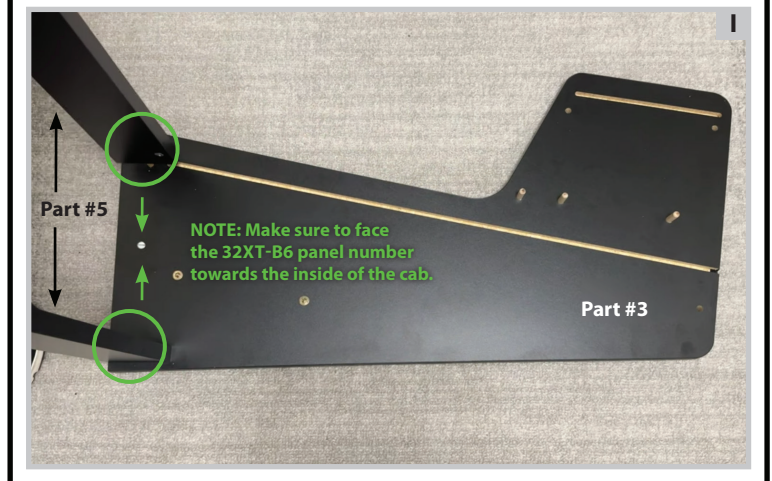
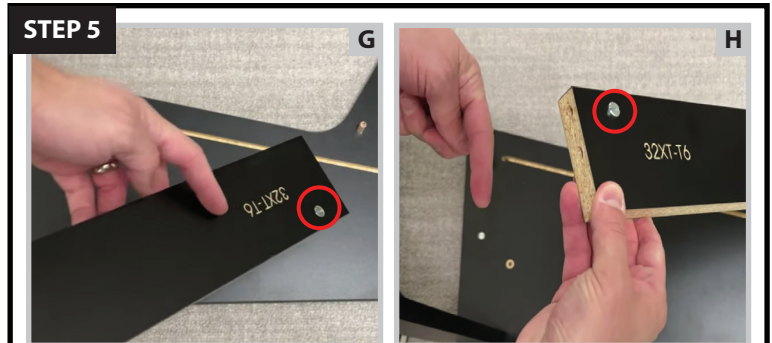


STEP 5

Parts Needed: Part #3 / Part #5 (x2)
metal cross dowels (x4)

Next, insert two metal cross dowels into one of the **PART #5 [32XT-B6]** panels [see image G]. Make sure to face the panel number towards the inside of the cabinet and insert the panel into the wood dowel pin where the lower green circle is shown in image I.

Repeat these steps on the second **PART #5 [32XT-B6]** panel [see image H]. Once again, remember to face the panel number towards the inside of the cabinet and insert the panel into the wood dowel pin where the higher green circle is shown in image I.



Xtension Arcade Cabinet Top Section

Assembly Instructions

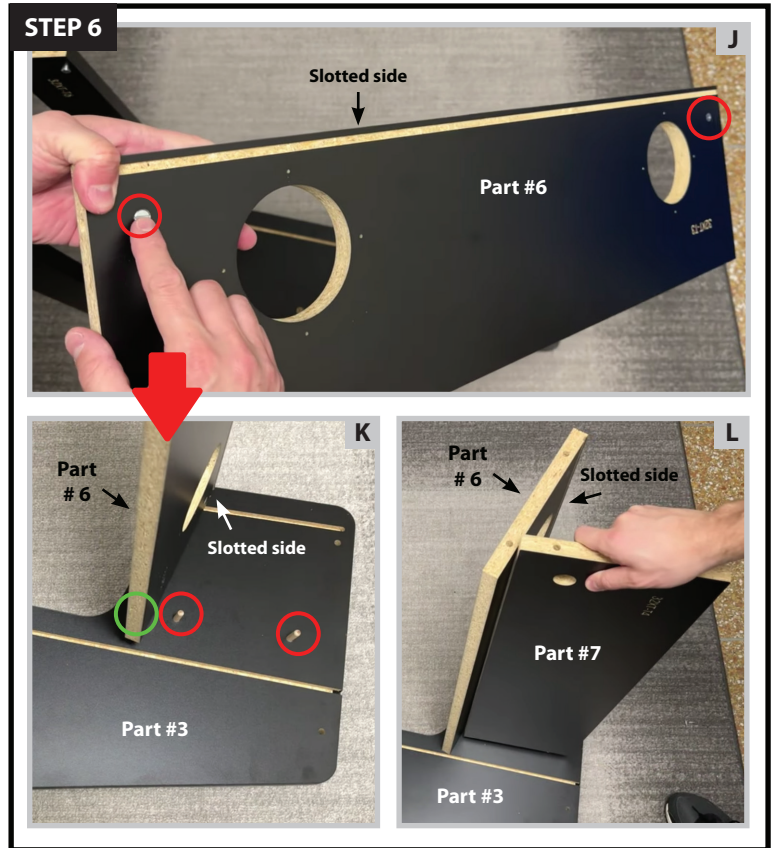
STEP 6

Parts Needed: Part #3 / Part #6 / Part #7 metal cross dowels (x2)

Next, install two metal cross dowels into **PART #6 [32XT-T3]** where the red circles are located [see image J]. Make sure to face the slotted side towards the front of the cabinet and insert into the single pin where the green circle is located [see image K].

The red circles in image K show where you will need to install **PART #7 [32XT-T4]**. Insert **PART #7 [32XT-T4]** into these two wood dowel pins above **PART #6 [32XT-T3]** [see image L].

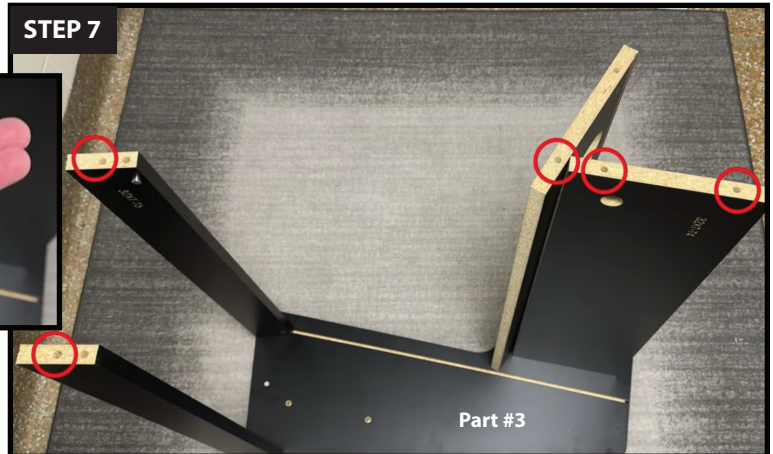
When finished **PART #6 [32XT-T3]** and **PART #7 [32XT-T4]** should be resting next to each other with the slotted side on the inside of these these two parts as seen in image L.



STEP 7

Parts Needed: Part #5 (x2) / Part #6 / Part #7 wood dowel pins (x5)

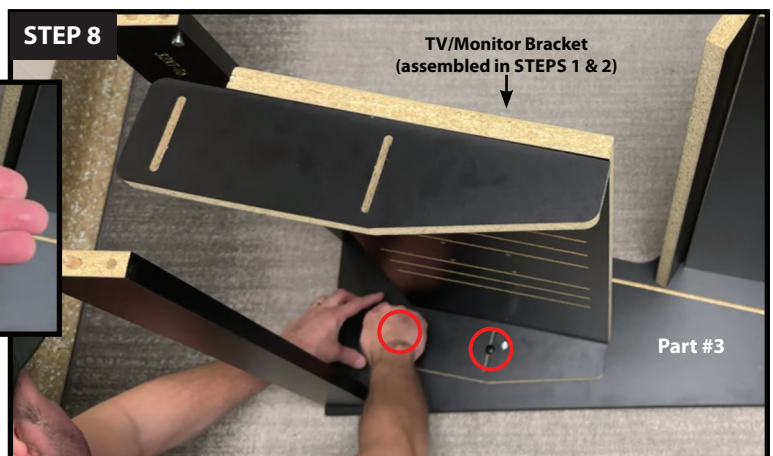
Next, install five wood dowel pins into the holes shown in the red circles located here.



STEP 8

Parts Needed: Part #3 / TV bracket bolts (x2) TV/monitor bracket (assembled in [STEPS 1 & 2](#))

Place the TV/monitor bracket [previously assembled in [STEPS 1 & 2](#)] in place and secure to **PART #3** (Left Side Top Upright) by hand tightening two of the four TV bracket bolts where the red circles are located.



Xtension Arcade Cabinet Top Section

Assembly Instructions

STEP 9

Parts Needed: Part #4
60mm bolts (x3)
M4 Allan Wrench

Now you can lay the **PART #4** (Right Side Top Upright) panel over the top. Look underneath and adjust as necessary until all of the wood dowel pins are in the correct holes. Secure the **PART #4** (Right Side Top Upright) panel using three 60mm bolts where the red circles are with the provided M4 Allan Wrench.

NOTE: DO NOT OVER TIGHTEN THE BOLTS!

STEP 10

Parts Needed: Part #4 / TV bracket bolts (x2)
TV/monitor bracket (assembled in [STEPS 1 & 2](#))

You can now secure the left side of the TV/monitor bracket [previously assembled in [STEPS 1 & 2](#)] by hand tightening the two remaining TV bracket bolts to the **PART #4** (Right Side Top Upright) where the red circles are located.

STEP 11

For this step, rotate the top of the cabinet 90° to its upright position [see images M & N].

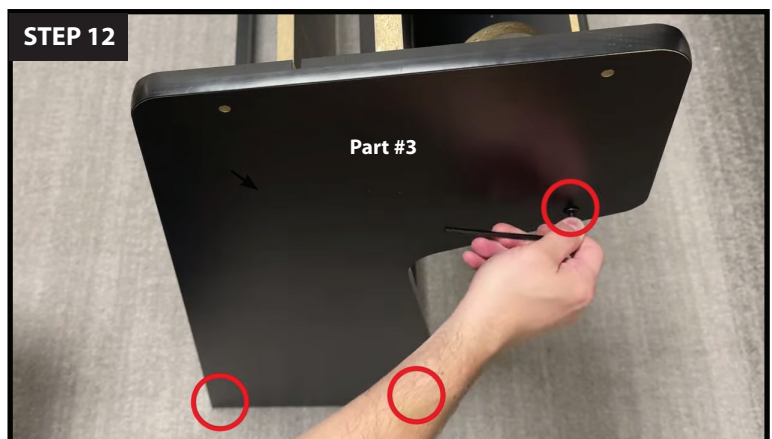
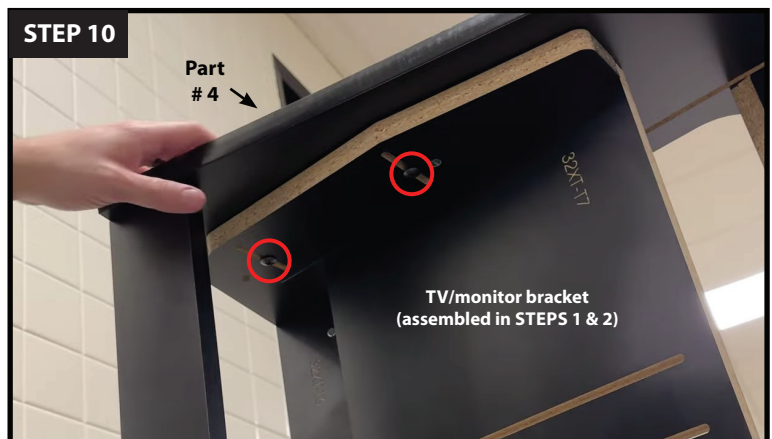
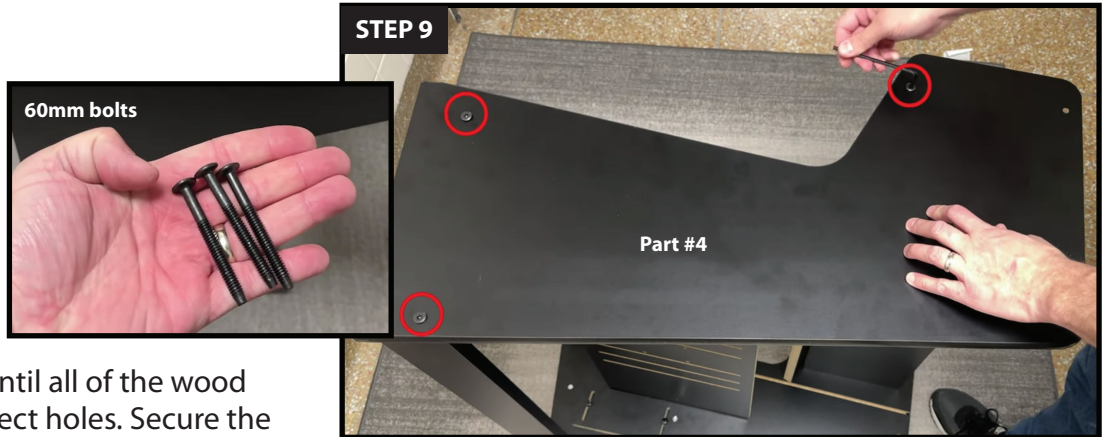
NOTE: IT IS VERY IMPORTANT TO APPLY PRESSURE ON THE UNBOLTED SIDE AS THERE ARE NO BOLTS SECURING IT IN PLACE WHEN ROTATING!

STEP 12

Parts Needed: Part #3 / 60mm bolts (x3)
4M Allen Wrench

Next insert an additional three 60mm bolts on the **PART #3** (Left Side Top Upright) panel where the red circles are located with the provided M4 Allan Wrench. [similar to [STEP 9](#)]

NOTE: DO NOT OVER TIGHTEN THE BOLTS!



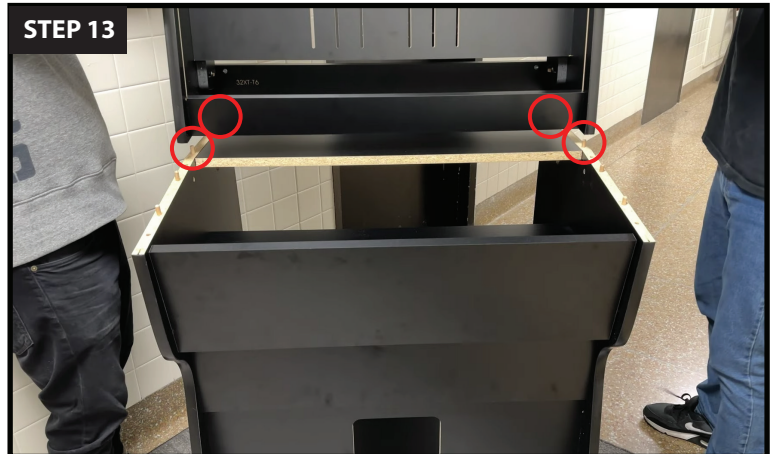
Xtension Arcade Cabinet Top Section

Assembly Instructions

STEP 13

Parts Needed: top section of cabinet
base section of cabinet

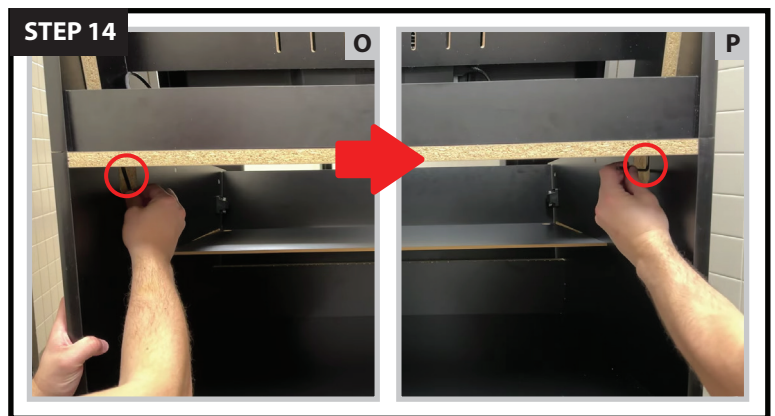
With the assistance of a second person, lift the top half of the cabinet and align it with the four dowel pins on top of the base section where the red circles are located. Once everything is lined up, drop it into place.



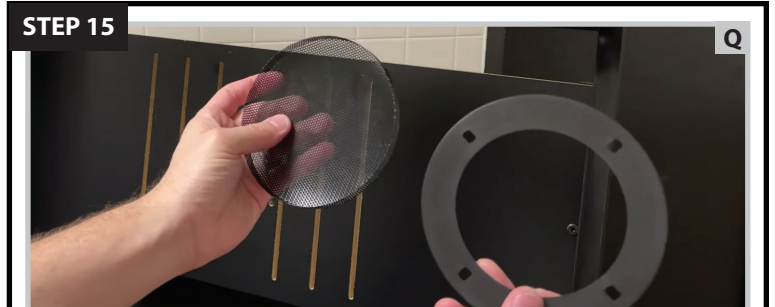
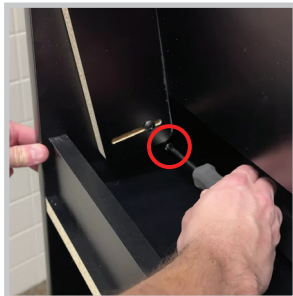
STEP 14

Parts Needed: top section of cabinet
60mm bolts (x2) / 4M Allen Wrench
flathead screwdriver [optional]

From the back of the cabinet insert two 60mm bolts into the recessed sections on both sides of the cabinet where the red circles are located. It is best to hand tighten the bolts as much as possible and then finish them off using the provided M4 Allen Wrench [see images O & P].



QUICK TIP: If the bolts are not going in smoothly you can adjust the position of the metal cross dowels in the top section using a flathead screwdriver.

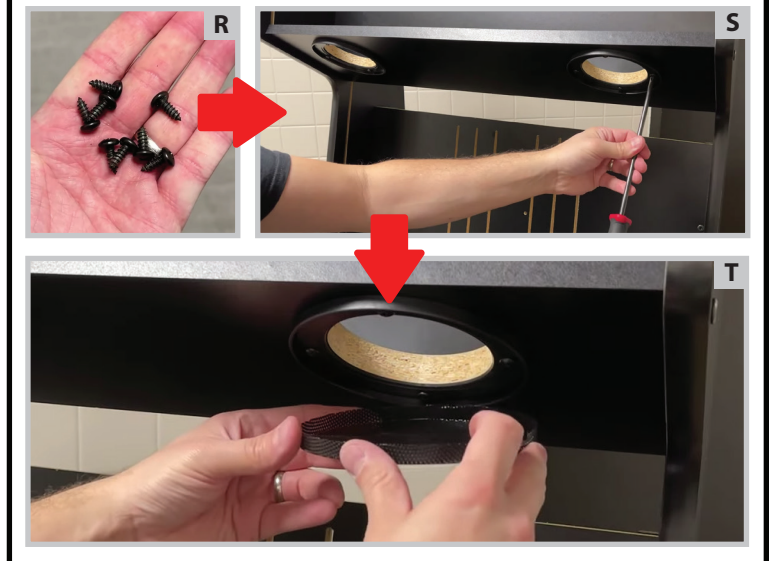


STEP 15

Parts Needed: Part #6 / speaker screws (x8) / screwdriver / Part #8 (speaker grill covers) (x2)

Next, separate **PART #8** speaker grills from the plastic rings [see image Q]. Using the provided screws, screw the plastic speaker grill rings into the pilot holes on the **PART #6 [32XT-T3]** panel using a screwdriver [see images R & S].

Finally, reinsert both speaker grills into both plastic speaker grill rings [see image T].



Xtension Arcade Cabinet Top Section

Assembly Instructions

STEP 16

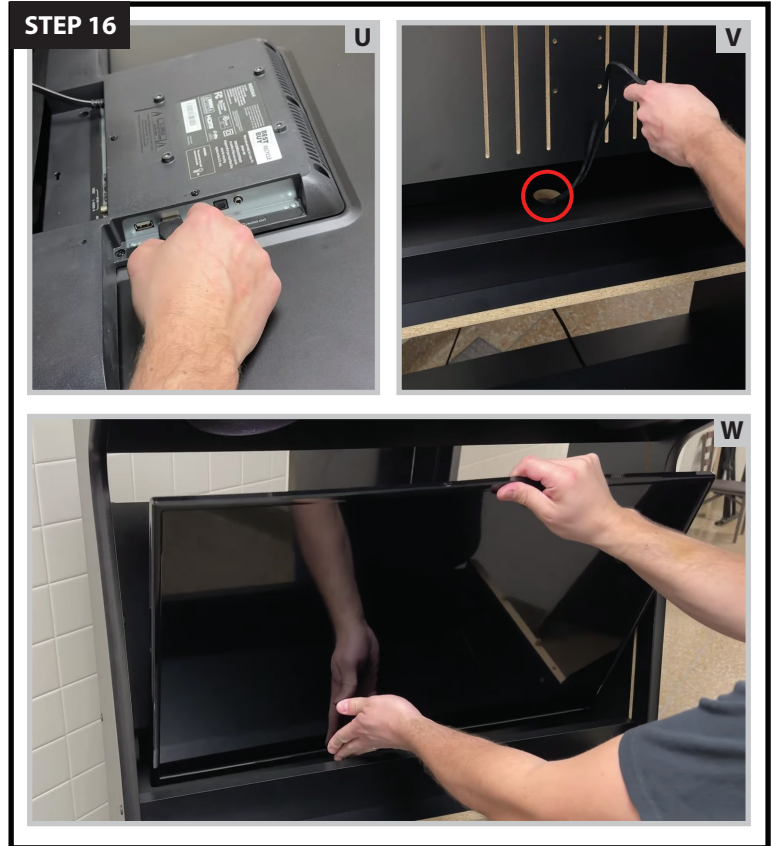
Parts Needed: TV or Monitor and cables
TV/monitor bracket (assembled in **STEPS 1 & 2**)

You can now attach any necessary cables to the back of your TV [see image U]. Then route all of the cables from your TV through the cable management hole where the red circle is located [see image V]. And finally, rest the TV against the mounting bracket [see image W].

QUICK TIP:

For a more detailed video on mounting a TV or monitor, please see the link below:

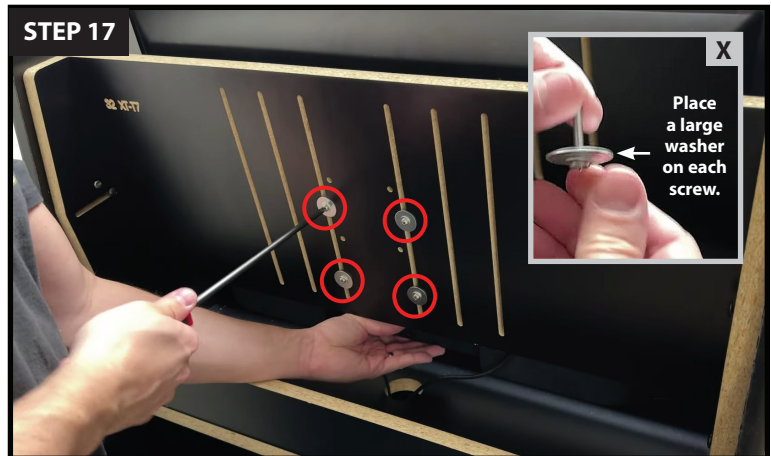
www.youtube.com/watch?v=AAXStZKNjc8&t=6s



STEP 17

Parts Needed: screwdriver / monitor screws (x4)
TV/monitor bracket (assembled in **STEPS 1 & 2**)
large washers (x4)

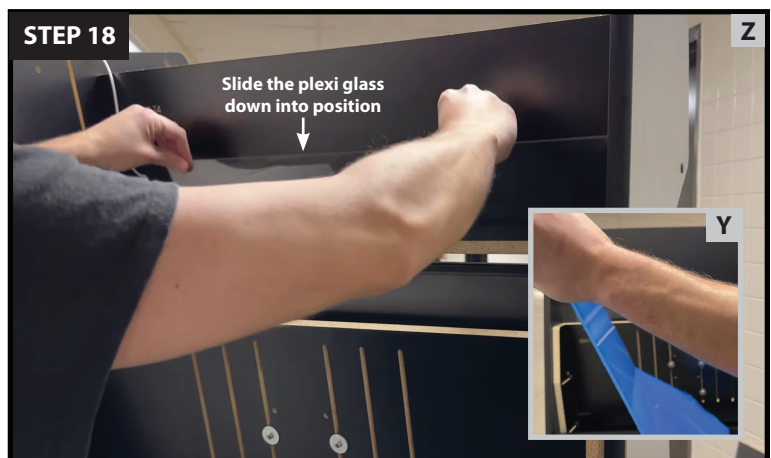
Next, place a large washer onto each of the four monitor screws. Secure the display to the mounting bracket from the back of the cabinet with the four monitor screws. It is best to hand tighten each screw as we will be adjusting the vertical position of the display. Once the TV/monitor is in the correct position, you will tighten each screw with a screwdriver.



STEP 18

Parts Needed: top section of cabinet
Part #9 (monitor bezel plexi glass)

Next, remove the blue protective film from **PART #9** (monitor bezel plexi glass) [see image Y]. Then slide it into the grooves on the top of the cabinet [see image Z].



STEP 19

Parts Needed: top section of cabinet
TV/monitor bracket (assembled in **STEPS 1 & 2**)
four TV bracket bolts / screwdriver

You can now adjust the front to back position of the TV bracket to your liking [see green arrows]. Once in place, tighten the four TV bracket bolts to secure the TV/monitor bracket to the top section of the cabinet where the red circles are located.

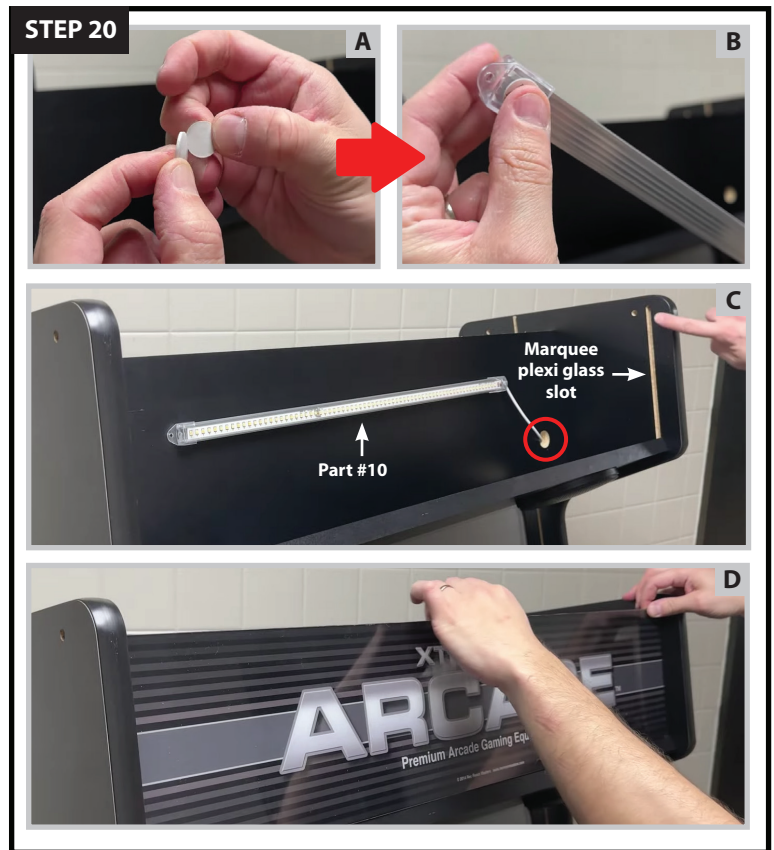


STEP 20

Parts Needed: top section of cabinet
adhesive dots (x2) / Part #10 (LED light housing)
Part #11 (marquee plexi glass).

Next, peel off the backing from the adhesive dots [see image A] and apply a dot to each side of **PART #10** (LED light housing) [see image B]. Stick **PART #10** to the rear Marquee panel and route the wires through where the red circle is located [see image C].

You can now install **PART #11** (marquee plexi glass) into the slots on the side of the cabinet [see image C]. Flex the marquee plexi glass as necessary to get it in place in the correct slots [see image D].



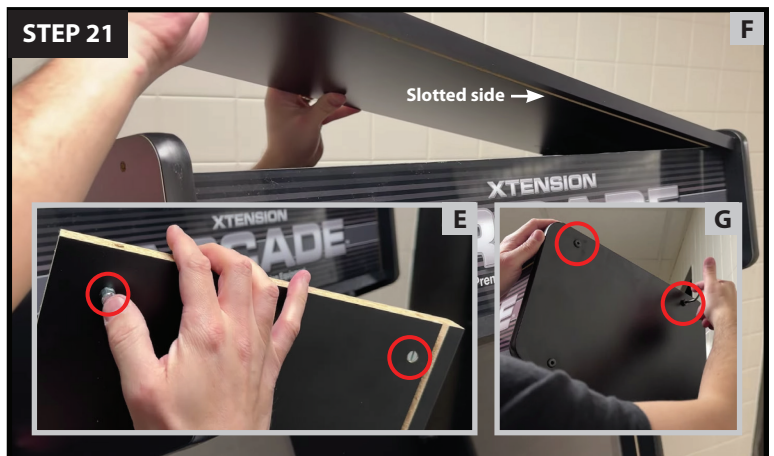
STEP 21

Parts Needed: Part #12 / metal cross dowels (x4)
top section of cabinet / 60mm bolts (x4)
M4 Allen Wrench / Part #11 (marquee plexi glass)

Next, install four metal cross dowels into the corners of **PART #12 [32XT-T5]**, two of which are shown where the red circles are located in image E. Make sure to align the slotted side with the top of **PART #11** (marquee plexi glass) and carefully drop it into place.

Finally, secure the **PART #12 [32XT-T5]** using four 60mm bolts. The red circles in image G show where two of the bolts are located.

NOTE: DO NOT OVER TIGHTEN THE BOLTS!



Xtension Arcade Cabinet Top Section

Assembly Instructions

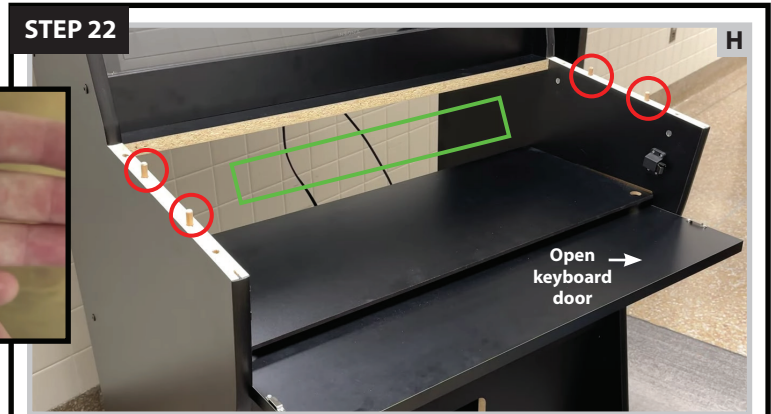
STEP 22

Parts Needed:

- base section of cabinet
- extension controller
- large head bolts (x4)
- M4 Allen Wrench



Open the keyboard door, then pass the controller's cables through the opening in the back of the cabinet [see the green rectangle in image H]. Align the controller over the four front wood dowel pins [see red circles in image H] of the base section of the cabinet. Then push down on the controller until flush. Secure the controller in place using the four large head bolts where the red circles are located [see image I].



NOTE: DO NOT OVER TIGHTEN THE BOLTS AS YOU MAY CRACK THE PLEXI GLASS OVERLAY!

STEP 23 [OPTIONAL]

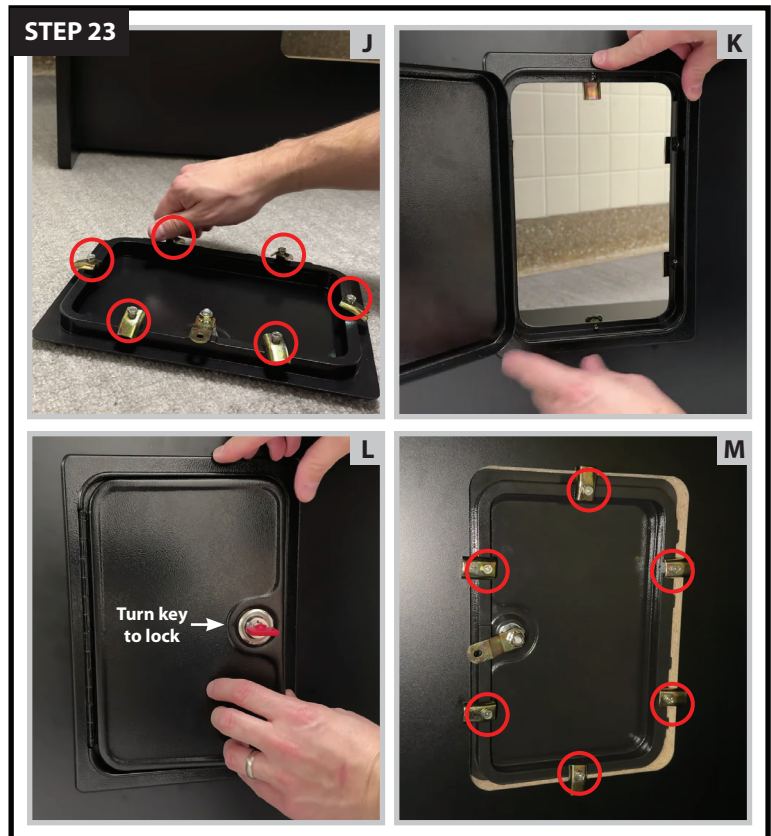
- #### Parts Needed:
- Part #0 coin door / screwdriver
 - base section of cabinet / coin door hardware

To install the optional coin door, start by hand tightening the mounting brackets along the perimeter of the door where the red circles are located in image J.

QUICK TIP:

For details on how to assemble & install the coin mech, please see this link

www.youtube.com/watch?v=IZfmrTYa8UY



Next, place the coin door into the panel cutout, moving any brackets out of the way as necessary [see image K]. Once fully installed, close the door and lock it [see image L]. From the back of the cabinet, swing the brackets to make contact with the wood and tighten them using a screwdriver [as indicated by the red circles in image M].



THANK YOU FOR YOUR PURCHASE.

GAME ON!



Rec Room Masters www.recroommasters.com
email: support@recroommasters.com